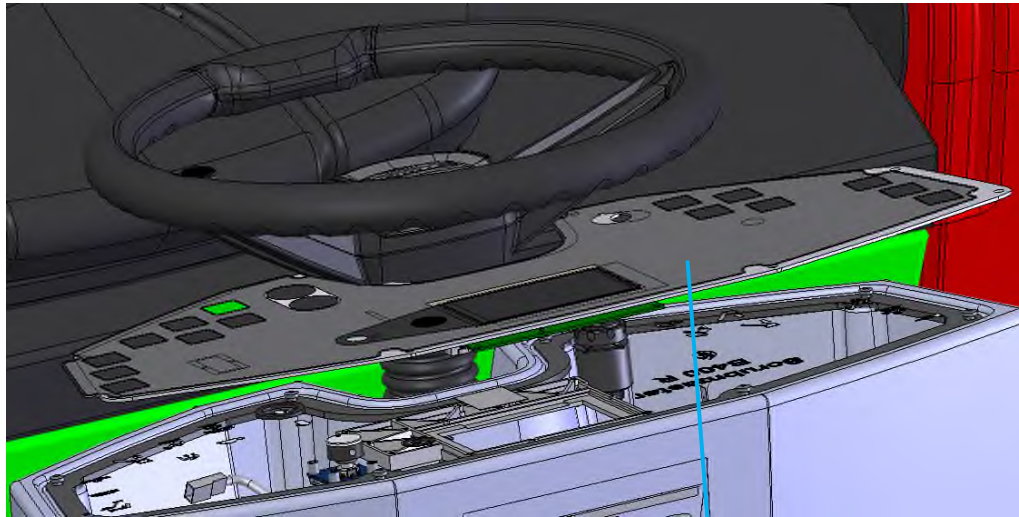
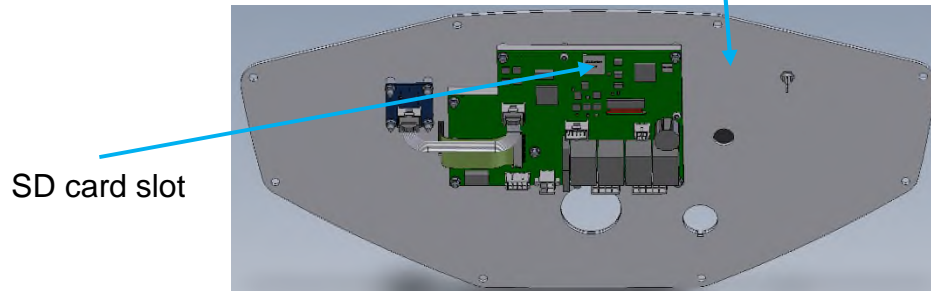


**11.2 Software-Update**  
**B175R**  
**B260R**  
**B400R/RM/RH**

### 1) Flash SD-Card



The SD cardslot is on the rear side of the display board A2. For flashing, the SD card has to be extracted from the slot. To do this dismount the dash-board (8 screws). Then you could take out the card.



SD card slot

Rear side of dash board

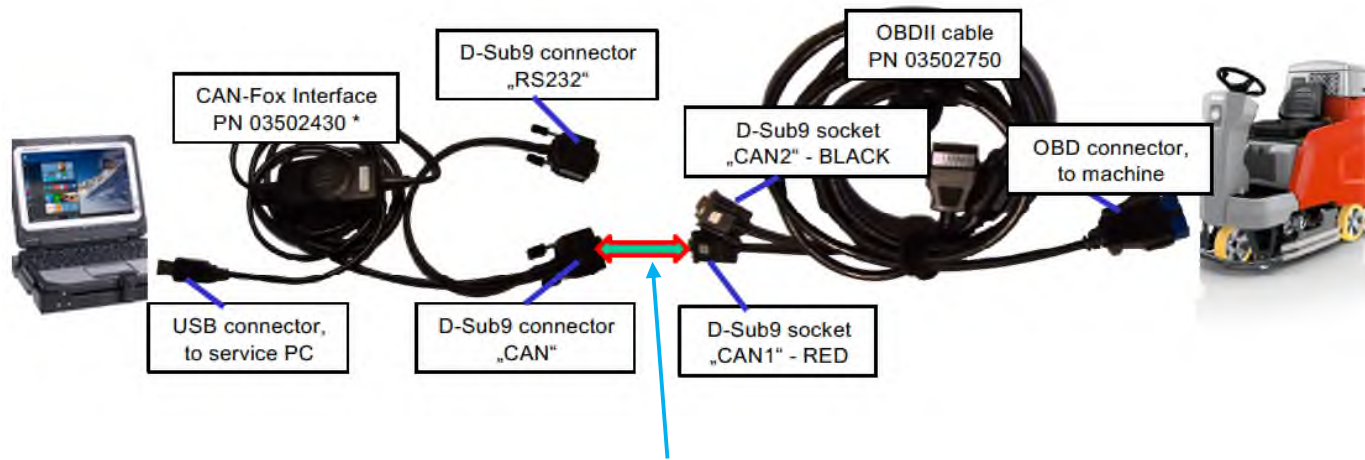
## SD-Card into computer SD-Slot

Only one SD drive may be connected, otherwise an error message will appear.

The Hako Diagnosis must be connected to an interface. A connection to the machine is not necessary.

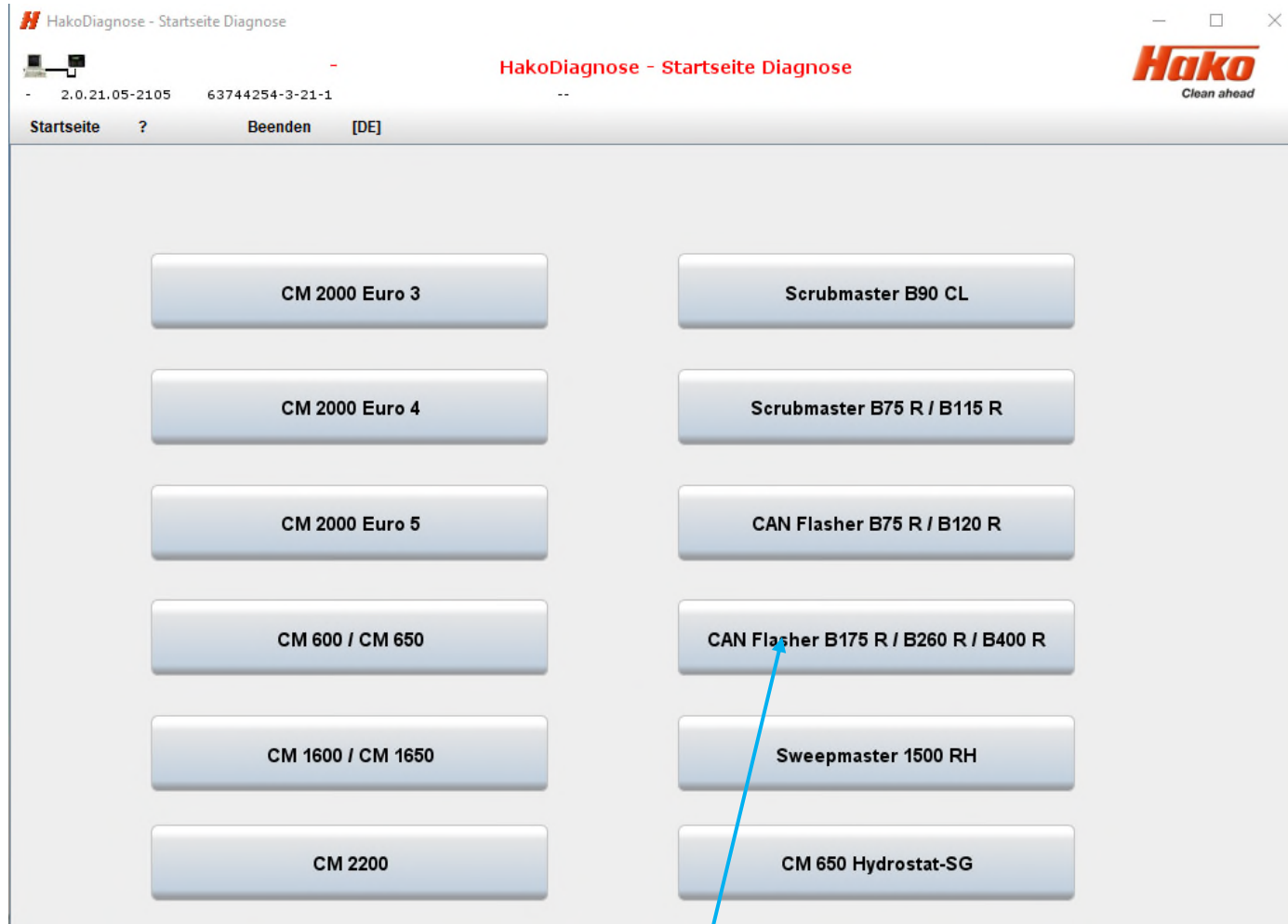
*Depending on whether not connected or connected follow the steps  
Interface is not connected to the machine      or  
Interface is connected to machine*

### Connection computer with machine



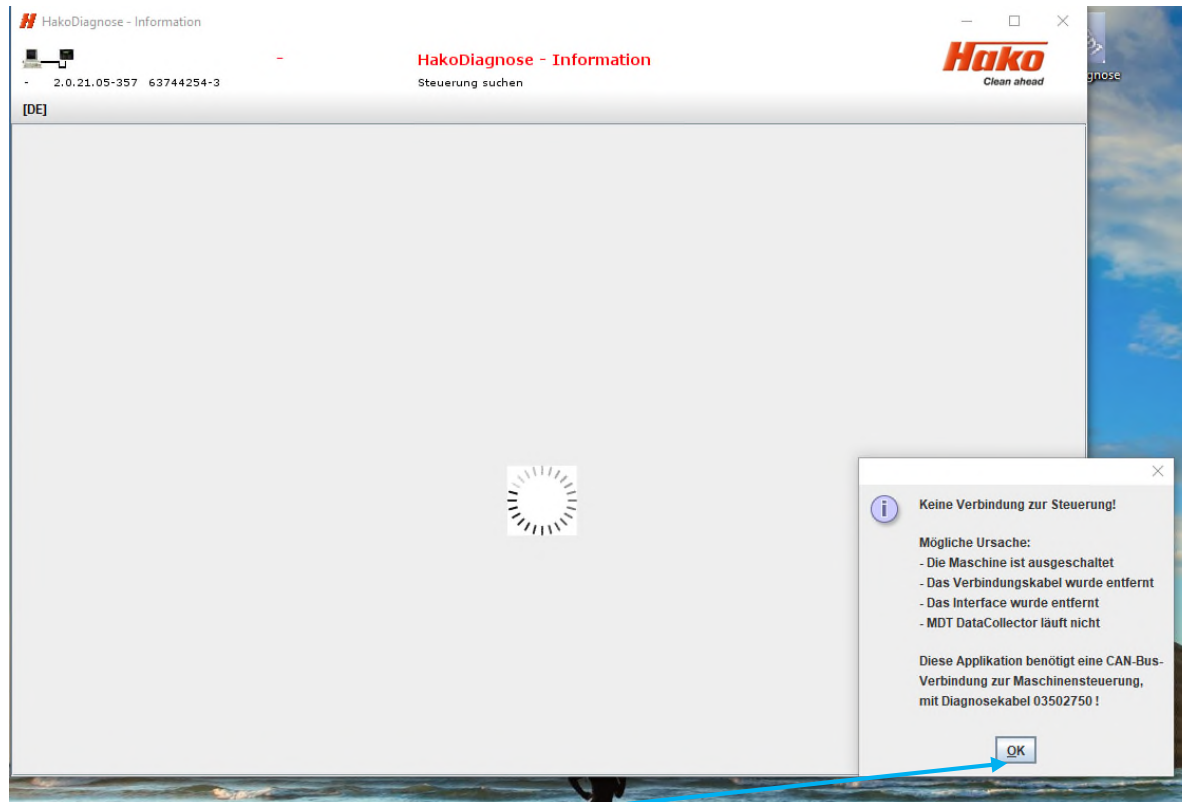
This connection can, but does not have to be

*\* Maschinentyp ist nur Beispiel*

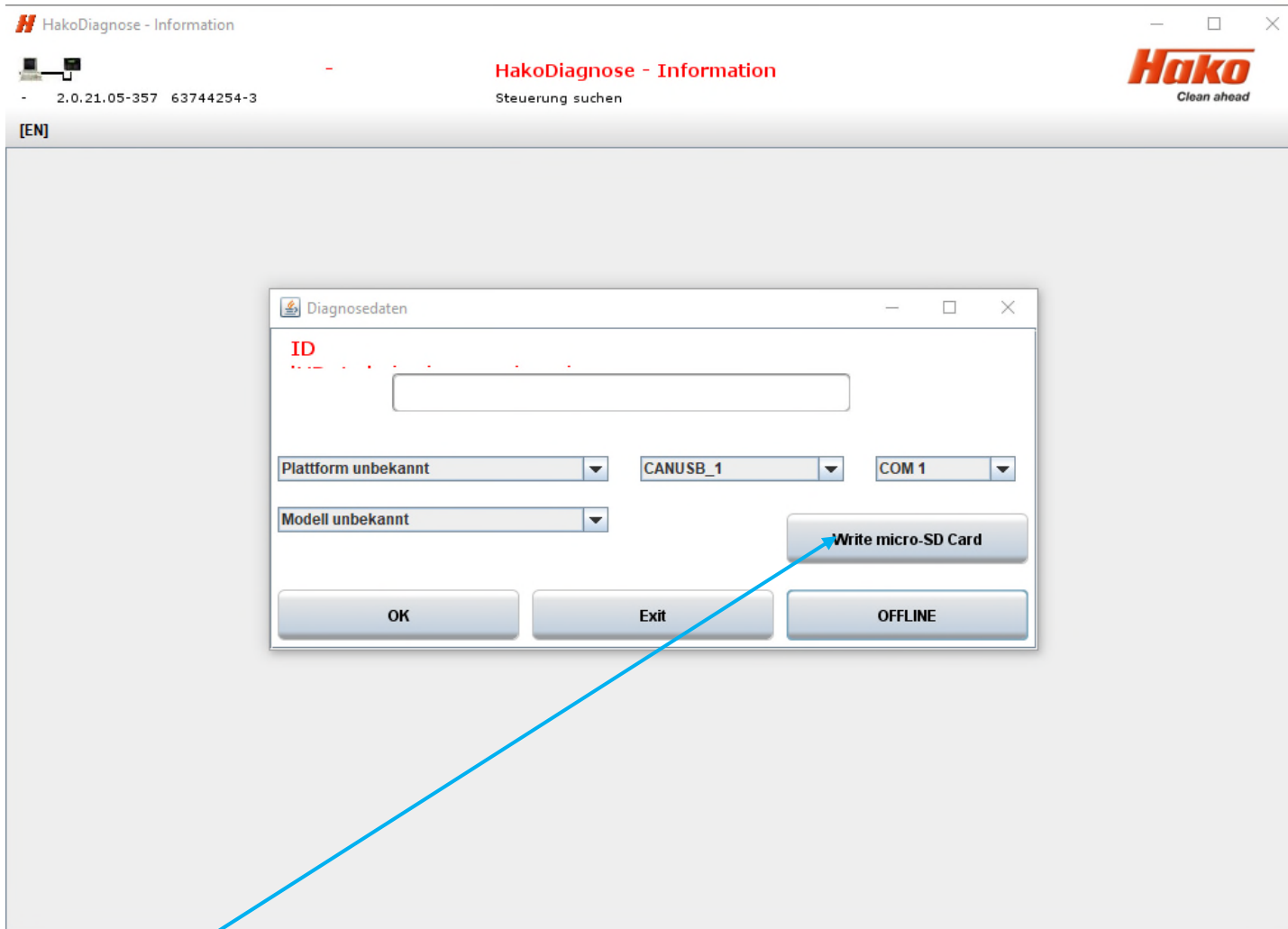


Choose "CAN Flasher B175R / B260R / B400R" program in Hako Diagnosis.

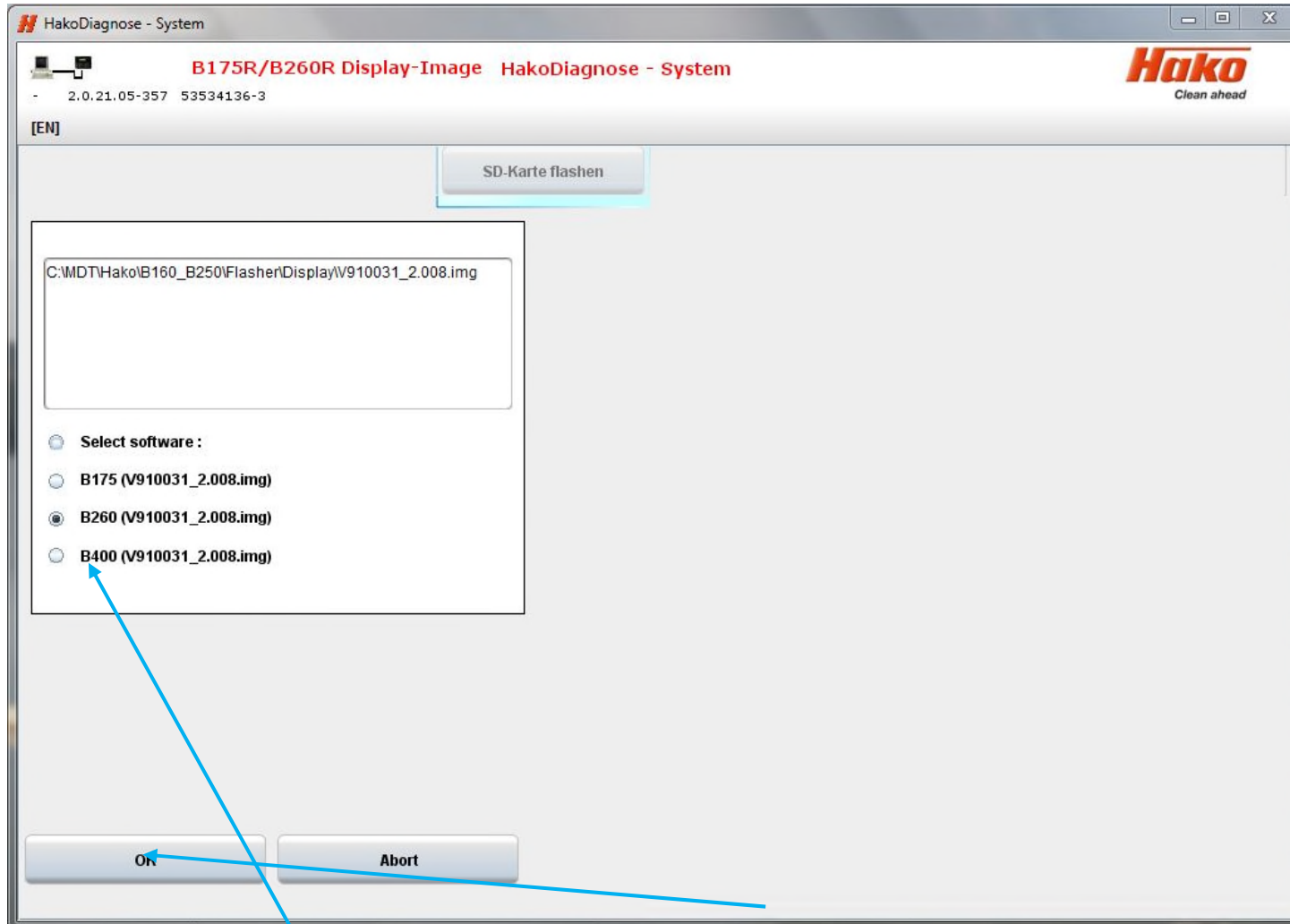
a) Interface is not connected to machine



By choosing "OK" the search process is canceled.



Choose "Write micro SD Card" program.

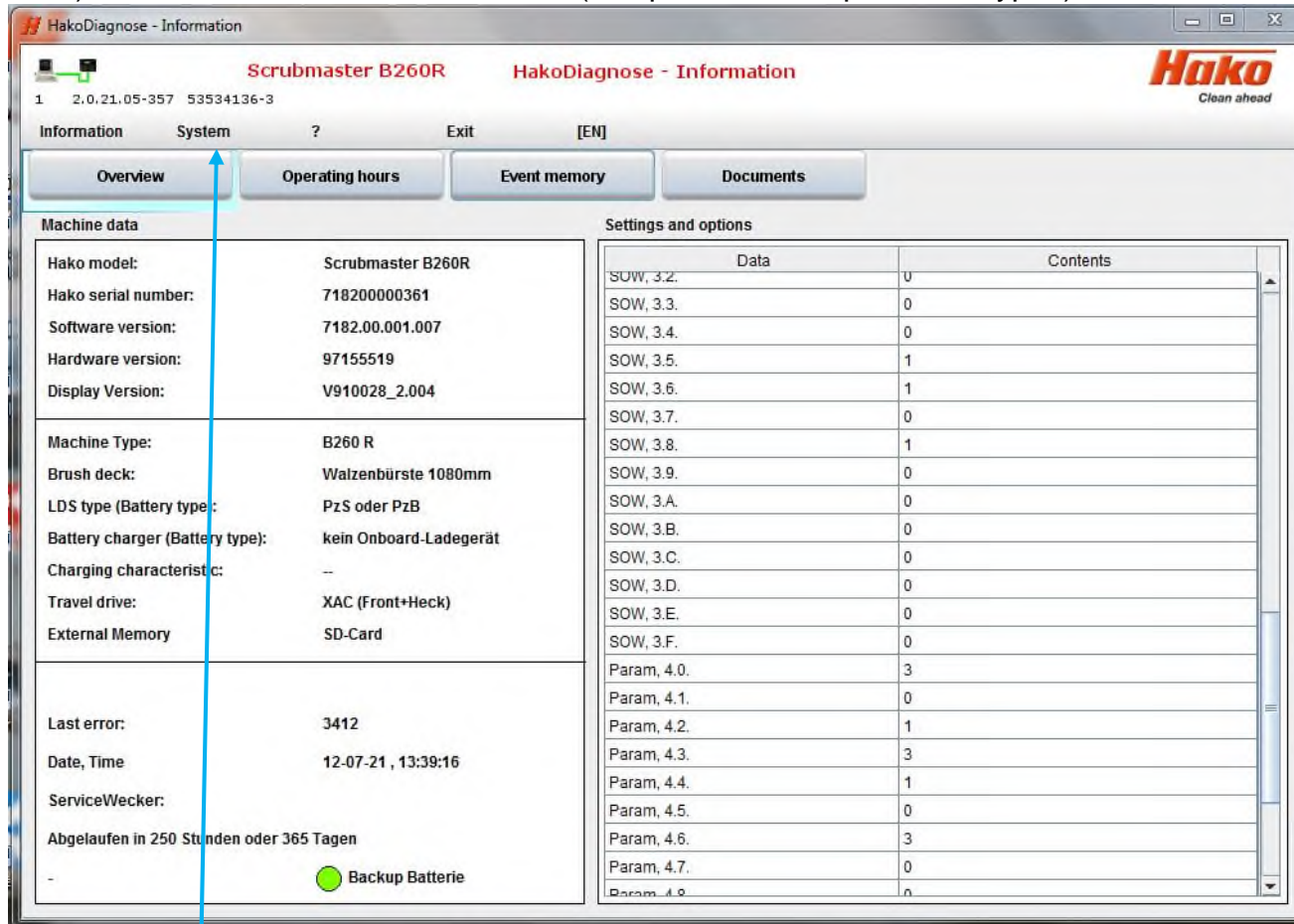


Choose corresponding machine and start flashing with “OK”.

*\* The software versions shown here may differ, as the document is only a snapshot*

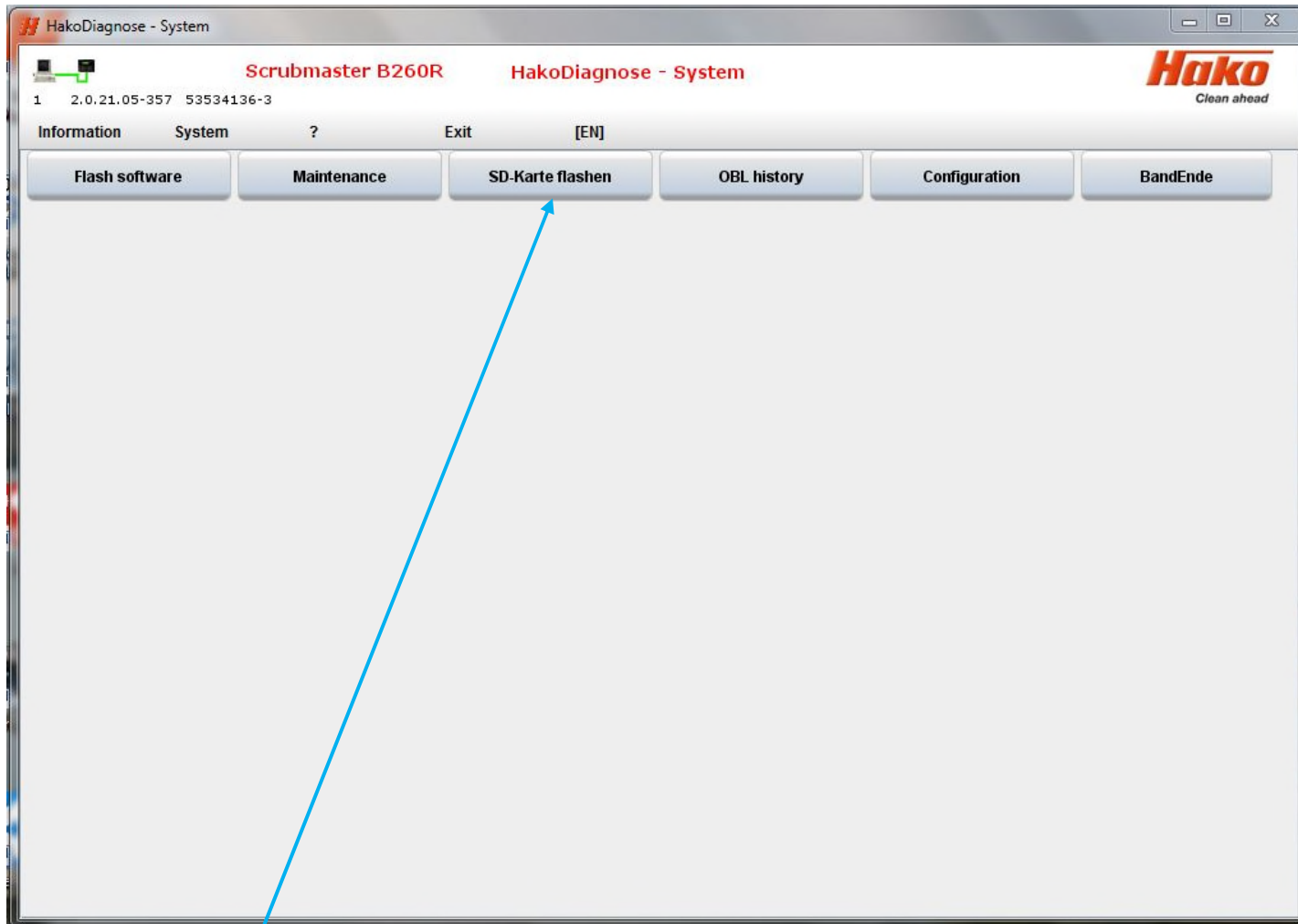


b) Interface is connected to machine (sample B260R, equal for all types)

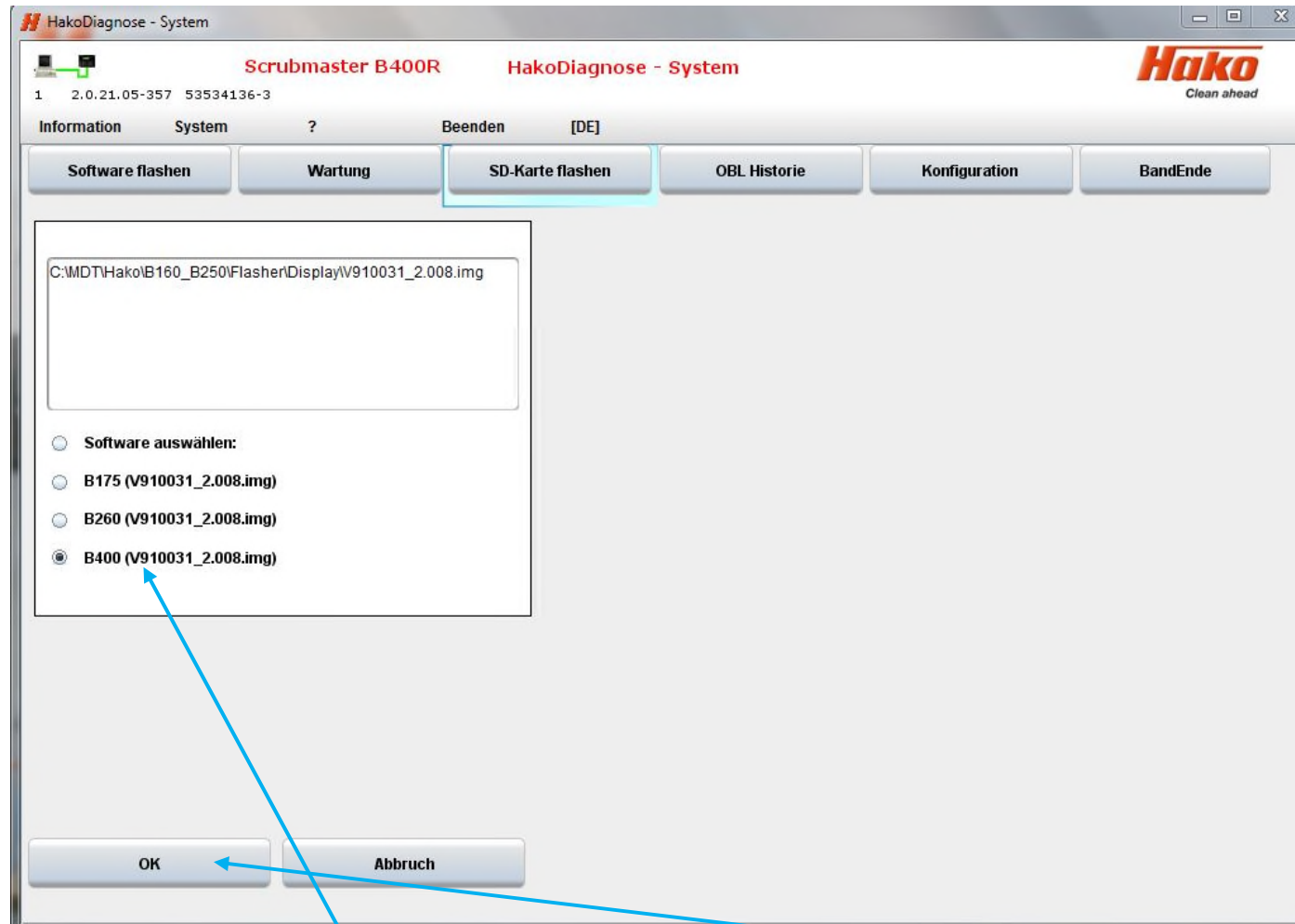


Choose menu "System"

\* The software versions shown here may differ, as the document is only a snapshot



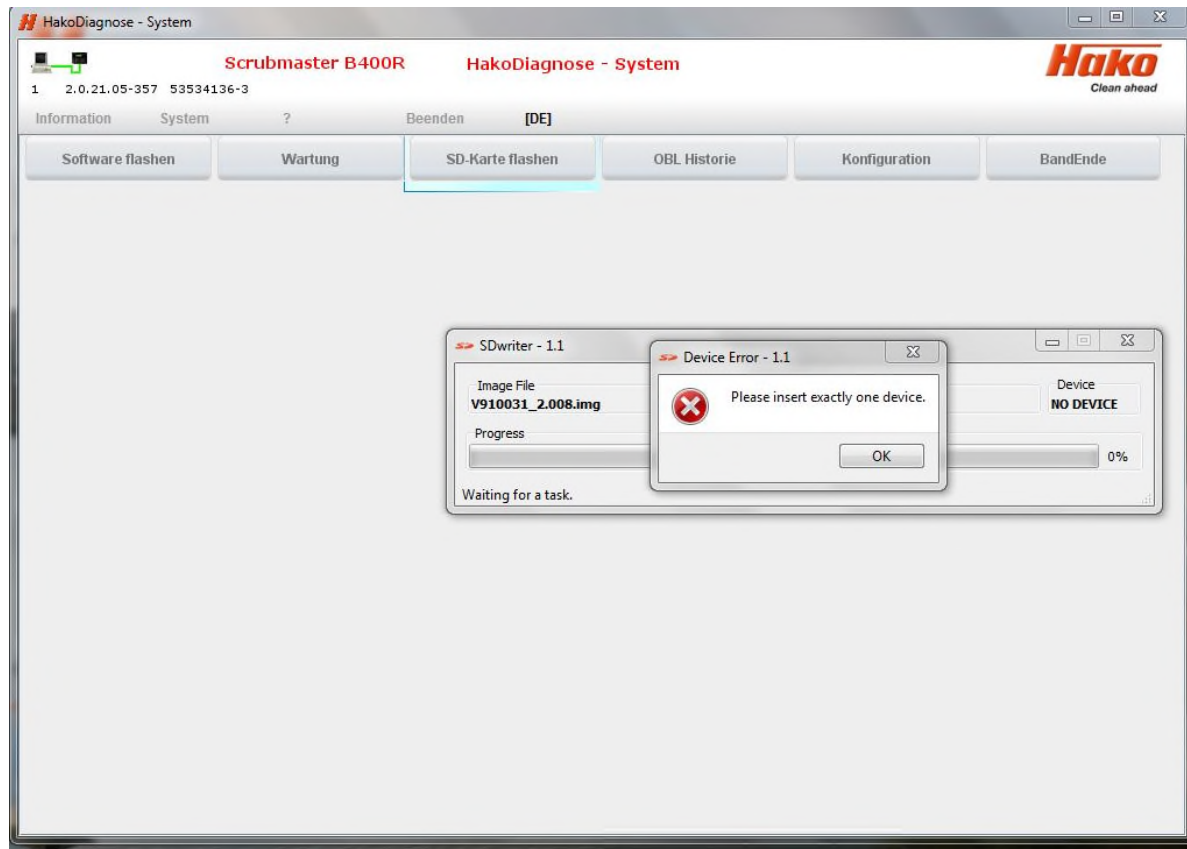
Choose the programm "SD-Karte flashen".



Choose corresponding machine and start flashing with “OK”.

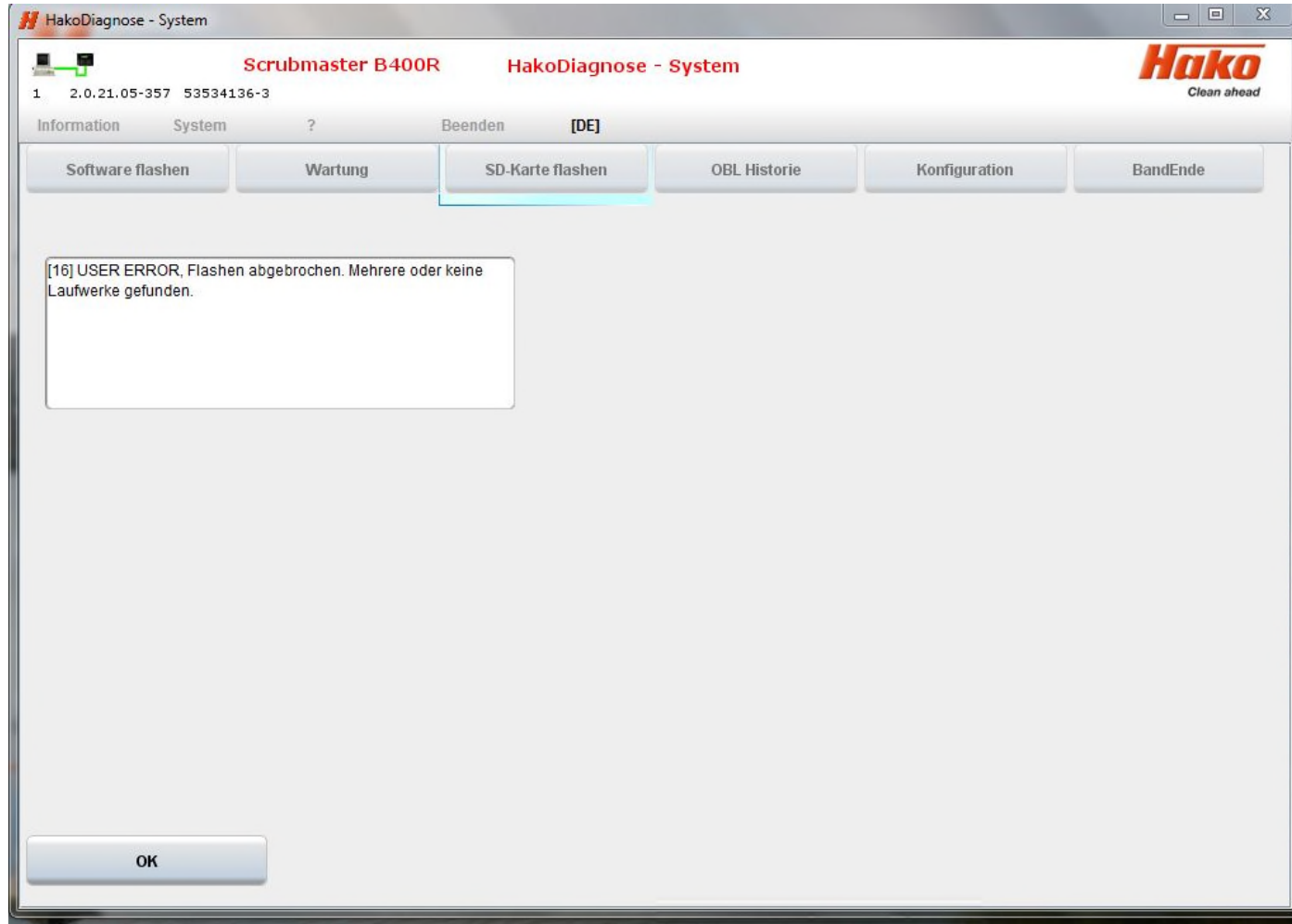
*\* The software versions shown here may differ, as the document is only a snapshot*

Possible error message with both variants

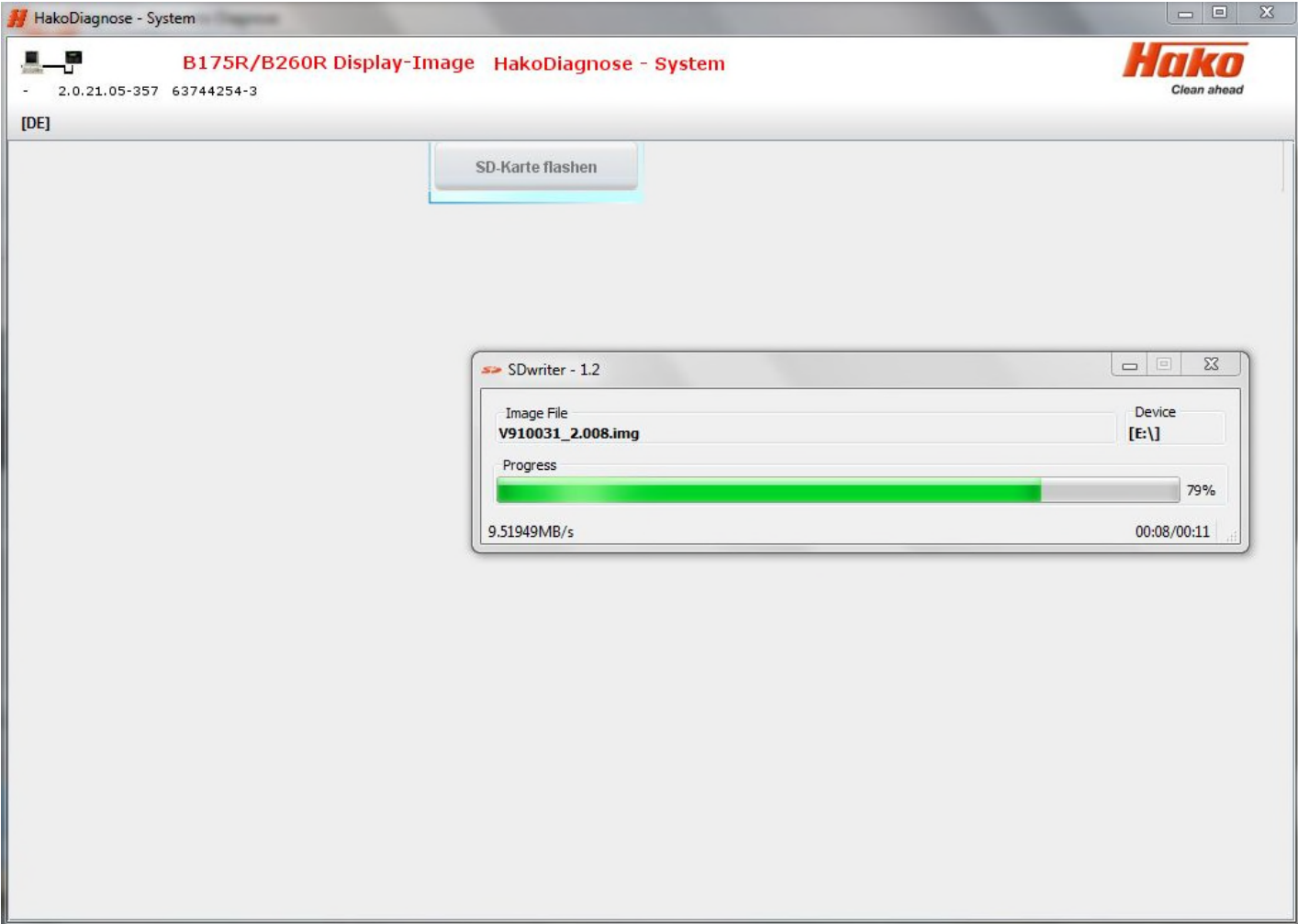


Message if there are problems with the SD card or the drive. The following errors are possible:

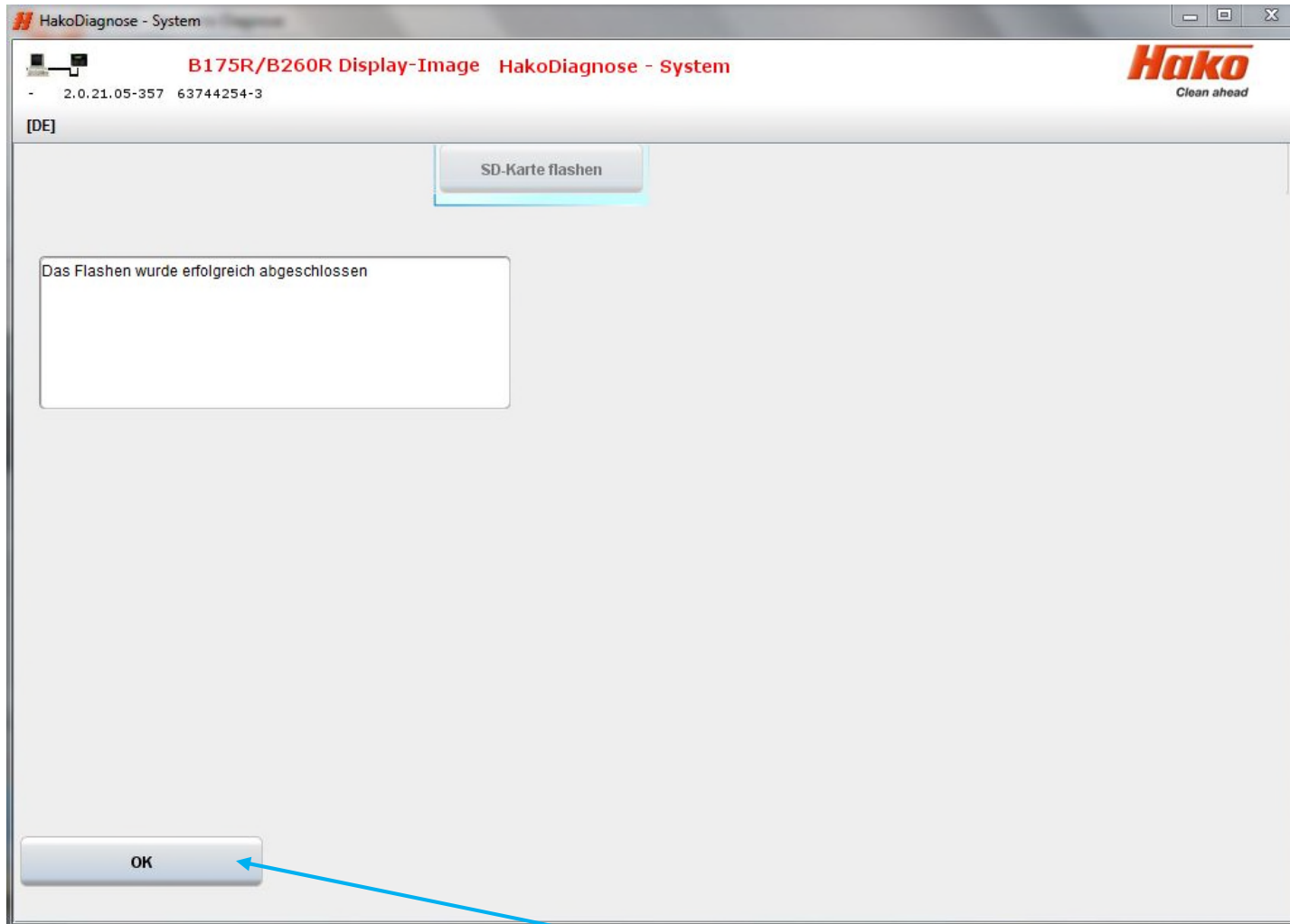
- SD card is defective
- SD drive is defective
- More than 1 SD drive is recognized
- Drive does not meet the specifications of the SD-Writer



Display if the message “Please insert exactly one device“ was confirmed with OK.

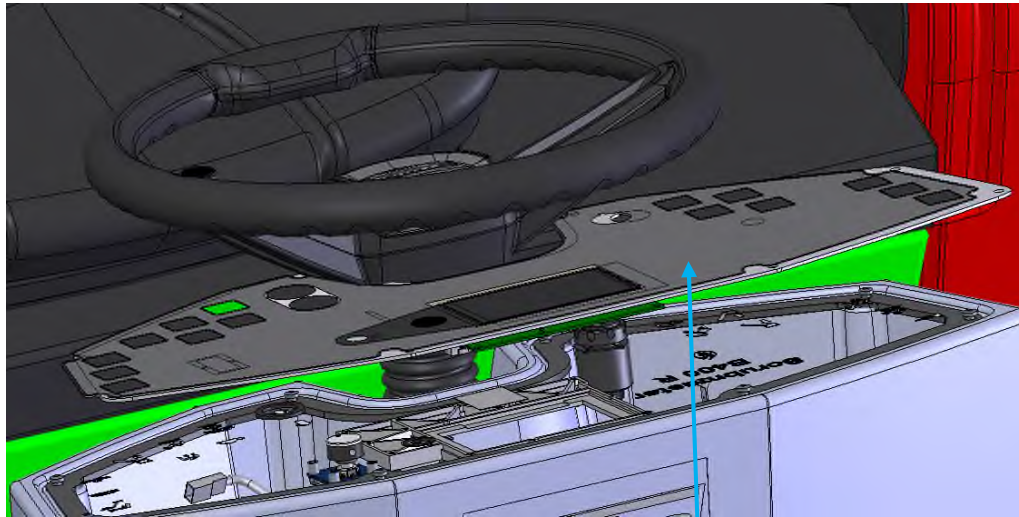


Display when the flash process has started normally

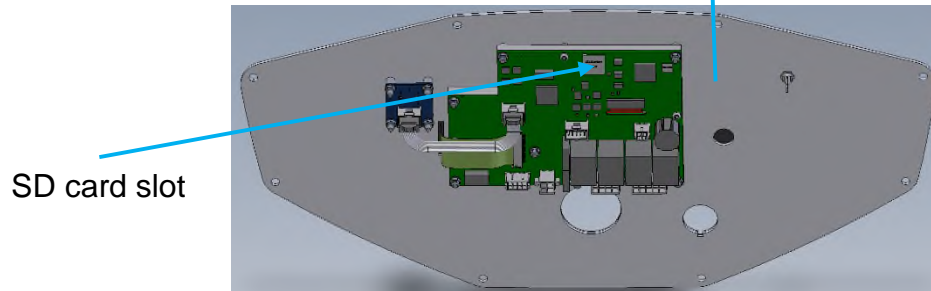


Flash process is succesfully finished. Confirm with "OK"

### SD card back into SD-Slot of display



After the flash process is done, put the SD card back (from the computer to the display).



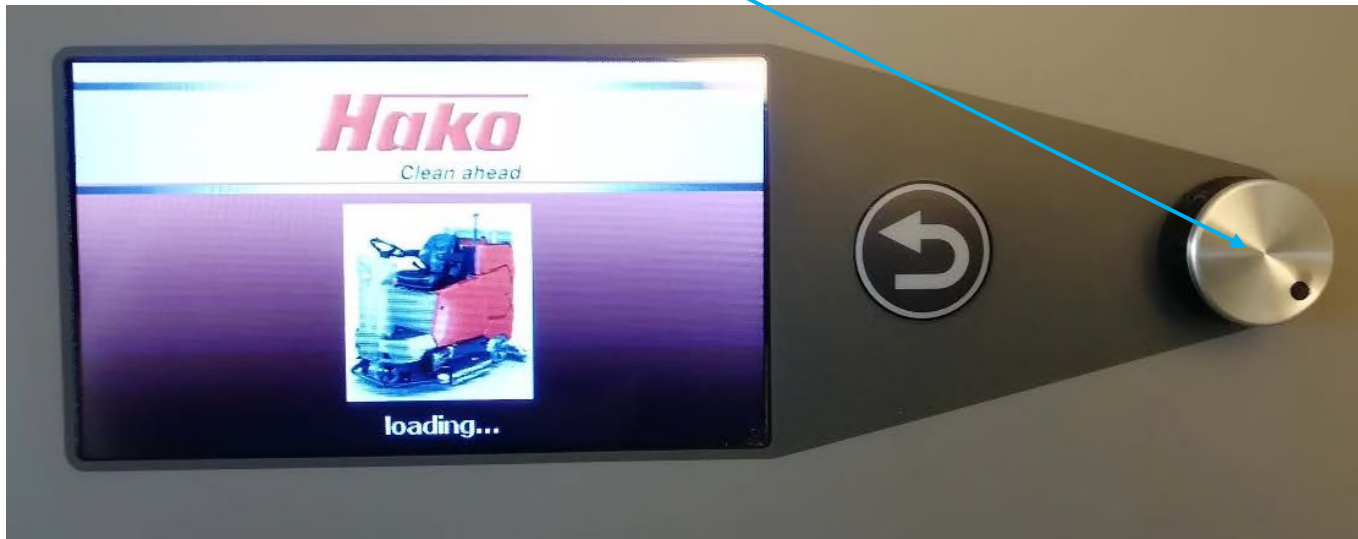
Rear side of dashboard



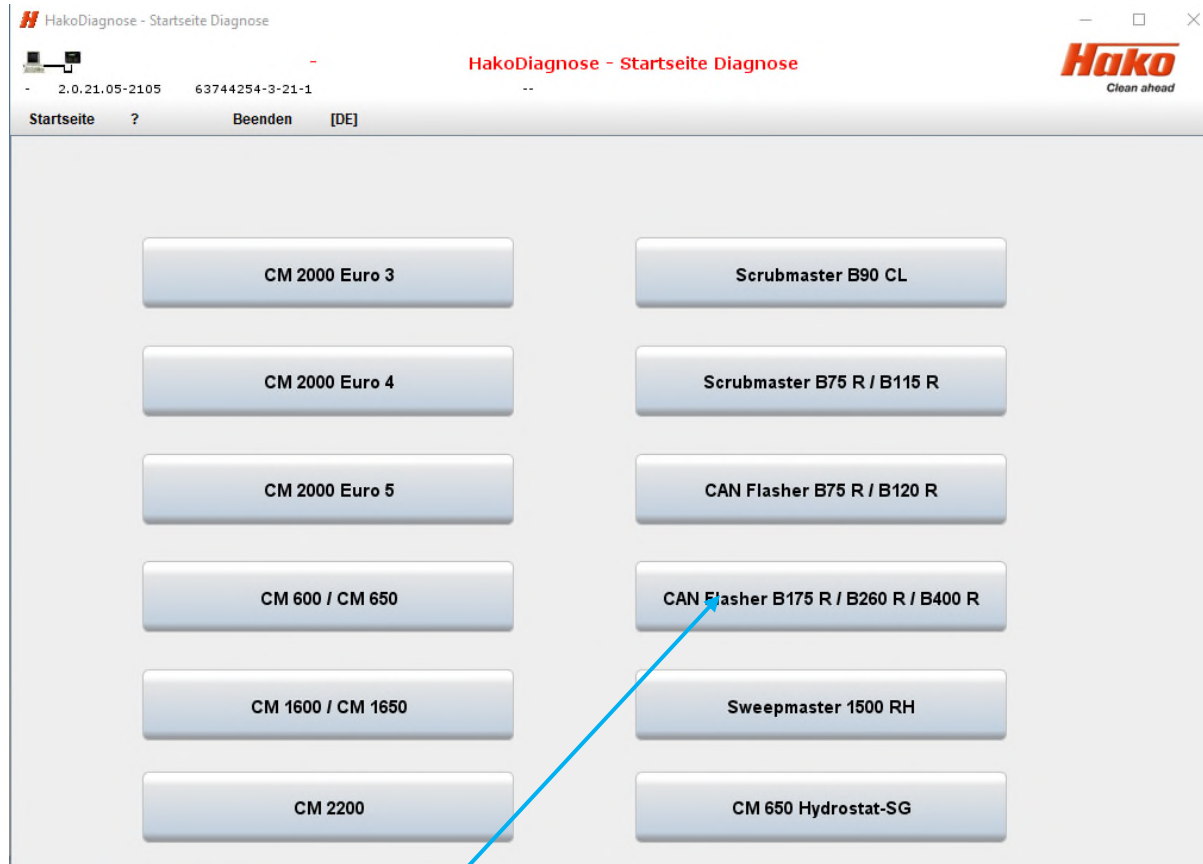
After the key switch is ON, the message of a new variant appears on the screen,



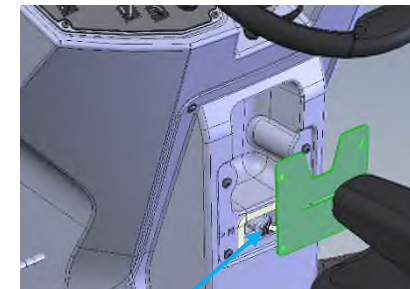
with the request "Update". To do this, just press the rotary push button. **Turning it leads to termination**



## 2) Flash software A1



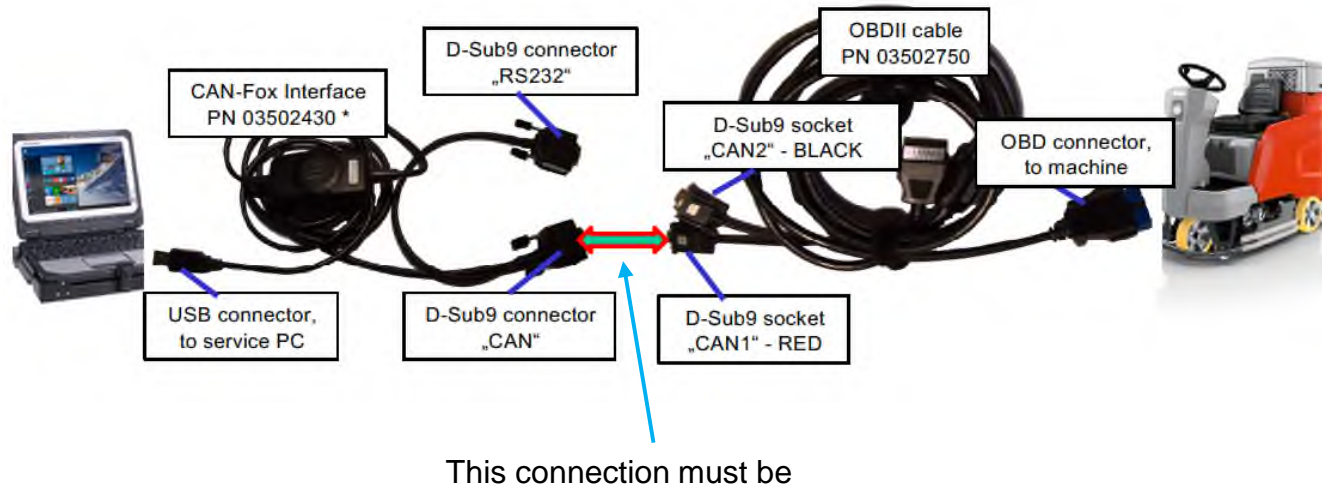
The Hako diagnosis must be connected to an interface. A connection to the machine (OBD plug) is essential.



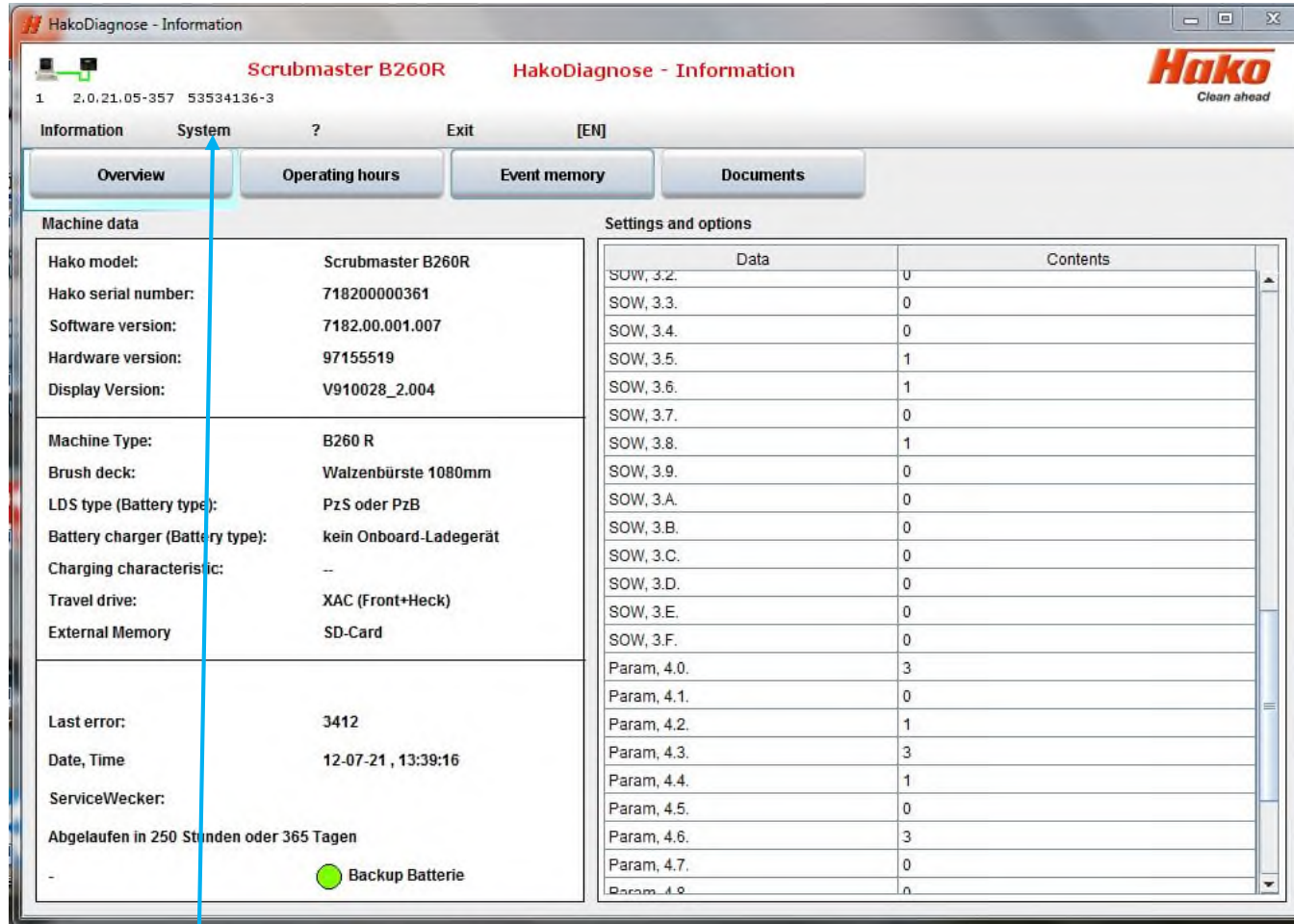
OBD plug

Choose "CAN Flasher B175R / B260R / B400R" program in Hako Diagnosis.

### Connection computer with machine

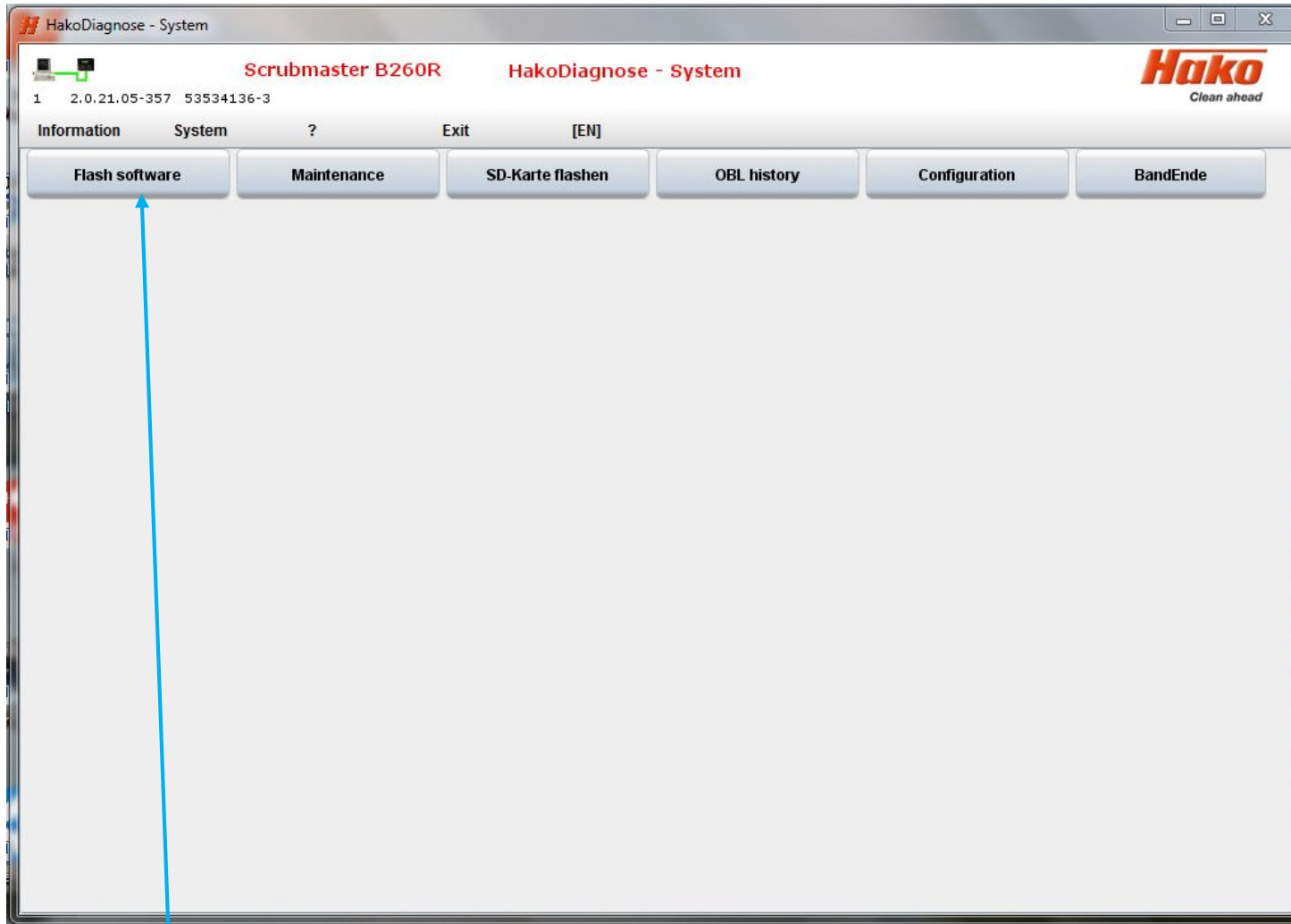


\* Maschinentyp ist nur Beispiel

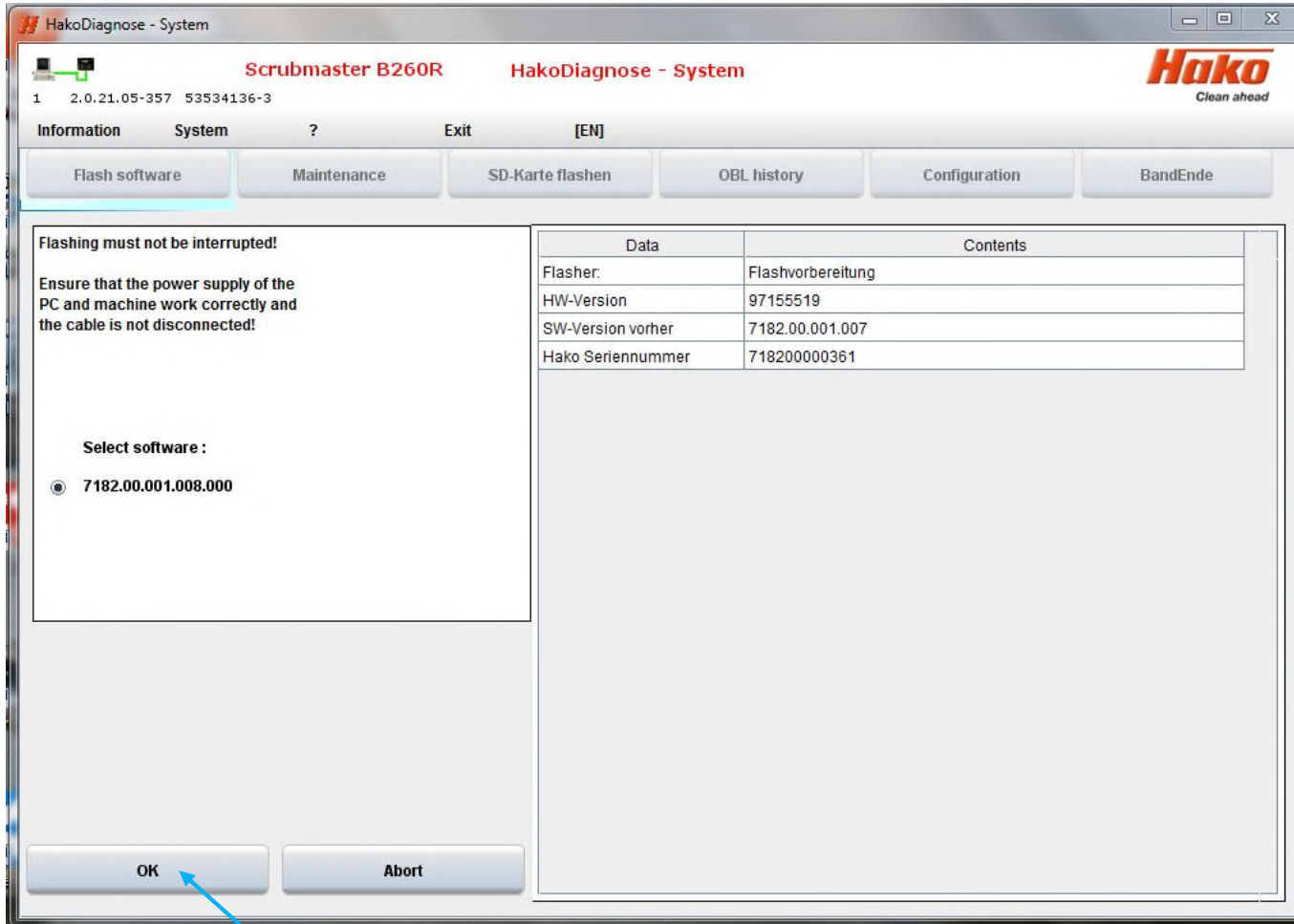


Choose menu "System" (sample B260R, equal for all types).

*\* The software versions shown here may differ, as the document is only a snapshot*

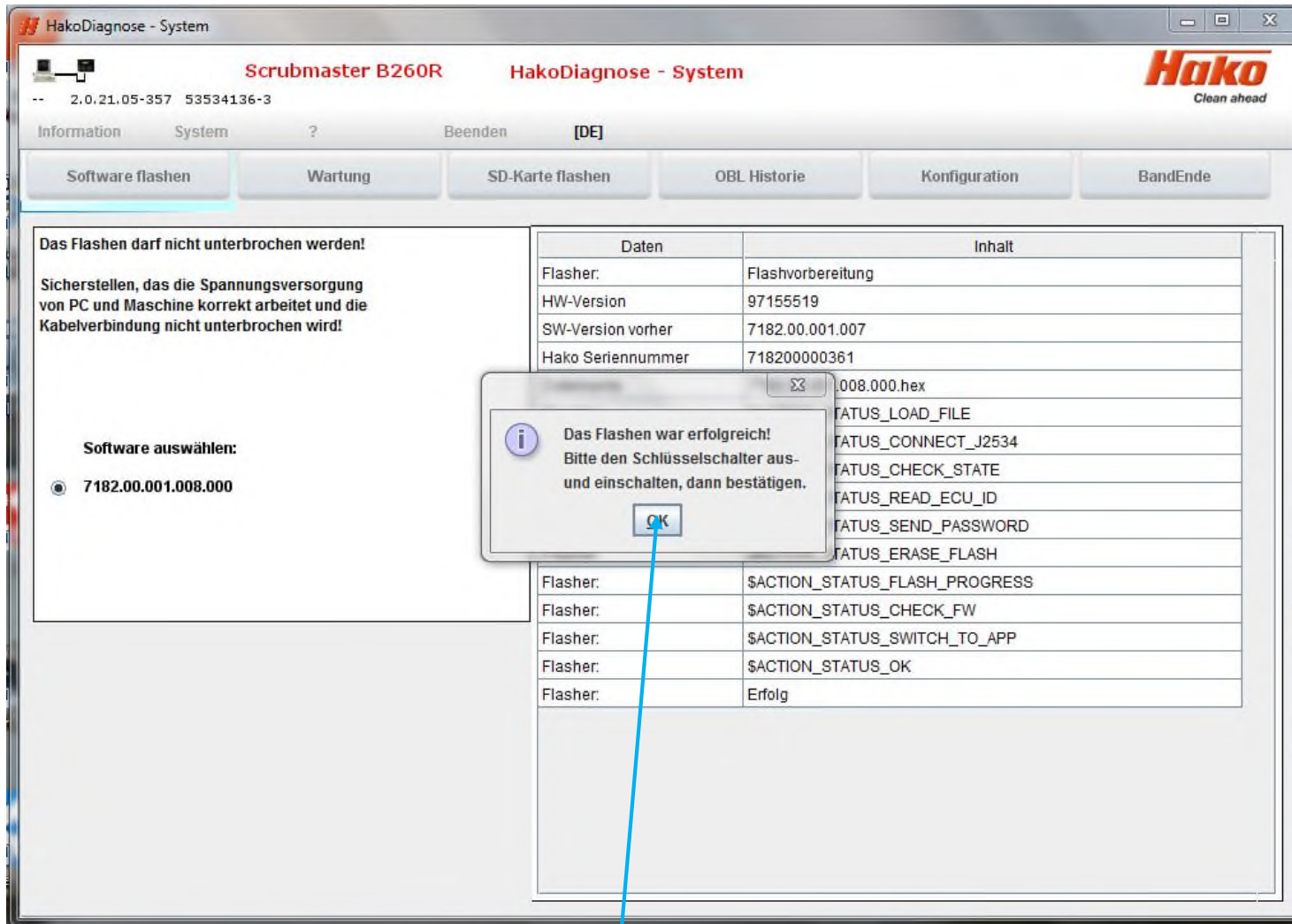


Choose program "Flash software".



Start flash process with "OK".

*\* The software versions shown here may differ, as the document is only a snapshot*



Flash process is succesfully finished. Confirm with "OK"

If only update software A1 is carried out. The following display appear after the key switch is ON.  
This means that newer display software is required

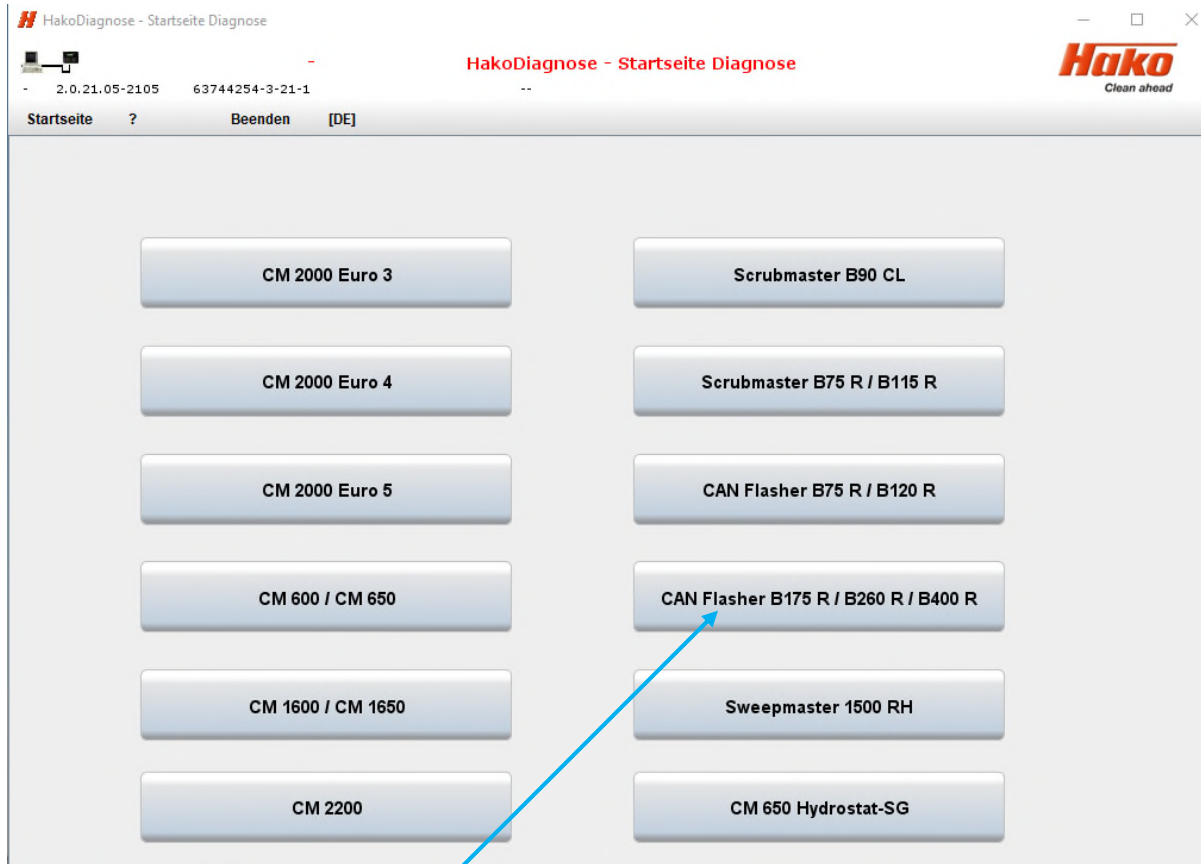
needed display software  
existing display software



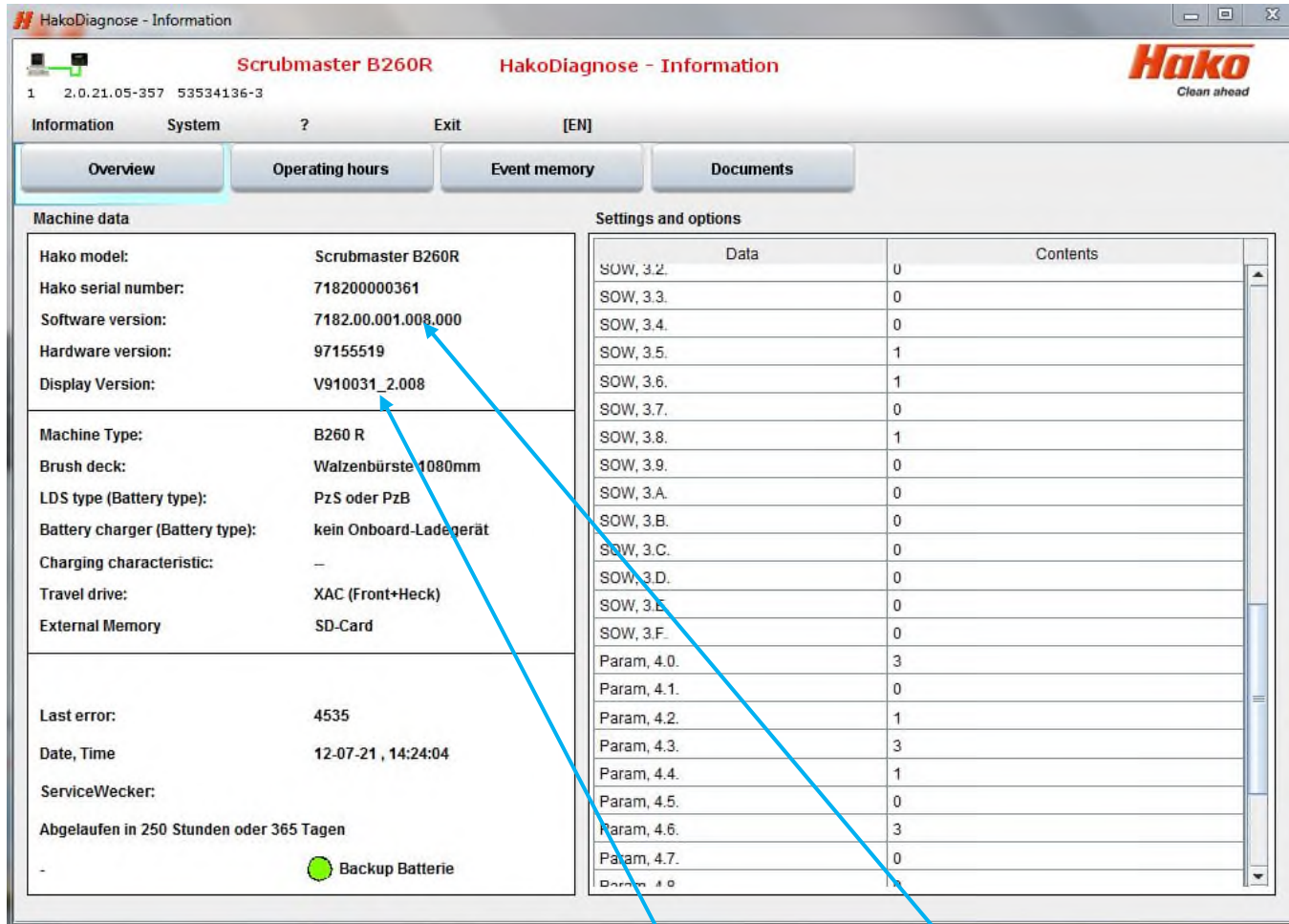
\* The software versions shown here may differ, as the document is only a snapshot



### 3) Check software versions



Choose "CAN Flasher B175R / B260R / B400R" program in Hako Diagnosis.



The screenshot shows the 'HakoDiagnose - Information' window for a 'Scrubmaster B260R'. The 'Overview' tab is selected. The interface is divided into 'Machine data' and 'Settings and options'.


**Machine data:**

- Hako model: Scrubmaster B260R
- Hako serial number: 71820000361
- Software version: 7182.00.001.008.000
- Hardware version: 97155519
- Display Version: V910031\_2.008

**Settings and options:**

Data	Contents
SOW, 3.2.	0
SOW, 3.3.	0
SOW, 3.4.	0
SOW, 3.5.	1
SOW, 3.6.	1
SOW, 3.7.	0
SOW, 3.8.	1
SOW, 3.9.	0
SOW, 3.A.	0
SOW, 3.B.	0
SOW, 3.C.	0
SOW, 3.D.	0
SOW, 3.E.	0
SOW, 3.F.	0
Param, 4.0.	3
Param, 4.1.	0
Param, 4.2.	1
Param, 4.3.	3
Param, 4.4.	1
Param, 4.5.	0
Param, 4.6.	3
Param, 4.7.	0
Param, 4.8.	0

Additional machine data:

- Machine Type: B260 R
- Brush deck: Walzenbürste 1080mm
- LDS type (Battery type): PzS oder PzB
- Battery charger (Battery type): kein Onboard-Ladegerät
- Charging characteristic: -
- Travel drive: XAC (Front+Heck)
- External Memory: SD-Card
- Last error: 4535
- Date, Time: 12-07-21, 14:24:04
- ServiceWecker: -
- Abgelaufen in 250 Stunden oder 365 Tagen
- Backup Batterie:  Backup Batterie

Compare the version numbers under "" Display Version: and Software Version: "with the specification (sample B260R, equal for all types)

*\* The software versions shown here may differ, as the document is only a snapshot*



**Alternative method** to check versions (sample B260R, equal for all types)

“Rotate” until green arrow on red background confirm by “Pressing” rotary push button



“Rotate” until the information field is framed in yellow confirm by “Pressing” rotary push button



*(sample B260R, equal for all types)*

- Serial number of the machine
- Display version
- Front wheel drive control version
- Rear wheels drive control version
- Main board (A1) version
- Bootloader version